



AXIAL FAN
user's manual

2010



Read this operation manual carefully before installation and commissioning of the device.
Observing the operation manual requirements enables ensuring reliable operation of the product within the whole warranty period.
Keep this operation manual available for the whole service life of the product as it contains requirements to maintenance of the device.

axial fans are designed for exhaust ventilation of apartments, offices, shops, kitchens, bathrooms and other residential and commercial premises heated during winter time. Fans are made of white plastic.

Fans are supplied with an insect screen.

DELIVERY SET

Fan - 1 pce;

Screws - 4 pcs;

Operation manual - 1 pce;

Packing box - 1 pce.

Fans are compatible with 100, 125, 150 mm diameter round ducts.

T fans models are supplied with run-out timer (switching delay 2-30 min).

H fans models are supplied with humidity sensor (60%-90%).

V fans models are supplied with built-in switch.

TURBO fans models are supplied with high-powered motors.

L fans models are supplied with ball bearing motor.

12 fans models are supplied 12 V motor.

The fans can be mounted with 4 screws and dowels horizontally or vertically to the ceiling, inside the ventilation shaft or in the air duct (fig.1-2).

The fans are designed for connecting to 220-240V/50Hz or 12V/50 Hz AC single-phase current network.

Installation and connection sequence are shown on fig.3-15.

Wiring diagrams are shown on fig. 10-15.

The fans are designed for continuous operation with continuous power supply.

Air direction is to match the pointer direction on the fan casing.

The fan is designed for continuous operation at the operating temperature ranging from 0°C to +45°C.

Protection rating from access to dangerous parts and water penetration is IP 34.

The fan surfaces require periodical cleaning from dirt and dust (Fig.16-21).

Cleaning is made with a soft cloth and water solution.

Avoid water dropping on the electric motor.

Wipe the surfaces dry after cleaning.

Store the fan in the original manufacturer's packing in a ventilated room at the temperatures between 0°C and +40°C and relative humidity not more than 80% at +25°C.

Fan design is regularly being improved, that is why some models can slightly differ from those ones described in this manual.

Algorithm of timer operation

Fan with timer switches on when control signal is supplied to input terminal LT. After control voltage is disconnected the fan continues operating within the set time adjusted between 2 and 30 min. Time regulation is performed by turning the potentiometer T clockwise to increase and anticlockwise to decrease the delay time (fig.13)

Fan with timer and humidity sensor switches on when control signal is supplied to input terminal LT or in case of exceeding the set humidity level regulated between 60% and 90%. After control voltage is disconnected or humidity level H decreases the fan continues operating within the time period regulated between 2 and 30 min. Time delay and humidity level regulation is performed by turning the respective T or H potentiometer clockwise to increase and anticlockwise to decrease the delay time and humidity level accordingly. To set the maximum humidity level set the potentiometer H in H max (90%) position (fig.13)

Attention! The timer electric circuit is current-carrying.

Any regulations are to be made only when the fan is switched off the power supply.

Installation, connection and adjustment works for the fan are to be performed only after its disconnecting from power supply network.

Installation and electrical connection works are to be performed by a qualified electrician personnel in accordance with all the applicable norms and standards.

Before installation and connecting the fan to the power supply network, please make sure that the fan is free of any visible damages or any foreign objects inside the casing that may damage the impeller.

PROHIBITED: misuse of the device or any unauthorized alteration or modification.

This device is not designed to be used by children or physically or mentally disabled persons, persons with sensory disorder, persons with no appropriate life experience and/or expertise unless they are properly instructed about the device use or supervised by the person in charge for their safety. Keep the device out of reach of children or supervise children to avoid their contact with the device. Single-phase network used for connection of the device must be in compliance with the acting norms and standards. Connection is to be performed through the switch built in the fixed wiring. Keep the clearance between the dead contacts not less than 3 mm.

Take precautions to prevent penetration of smoke, carbon monoxide and other combustion products into the room through open chimney flues or other fire-protection devices. Take also measures to disable gas back draft in case of gas or open flame utilization.

The transferred air shall not contain any dust or other solid particles, sticky substances and fibrous materials. Use of the device in the proximity of inflammables or vapors such as spirit, gasoline, insecticides and others is forbidden.

Do not close or block unit inlets and outlets in order to allow the optimal air passage. Do not sit or put objects on the unit.

WARRANTY

We hereby declare that the following complies with the essential protection requirements of Electromagnetic Council Directive 2004/108/EC, 89/336/EEC and Low Voltage Directive 2006/95/EC, 73/23/EEC and CEMarking Directive 93/68/EEC on the approximation of the laws of the Member States relating to electromagnetic compatibility.

This certificate is issued following test carried out on samples of the product referred to above.

Assessment of compliance of the product with the requirements relating to electromagnetic compatibility was based on the following standards.

The manufacturer guarantees normal operation of the unit for 60 months from the date of resale, accordingly to the transport, storage, mounting and operation regulations described herein. In case of no confirmation of the sales date the warranty period is calculated starting from the production date.

In case of failure due to faulty manufacturing during warranty period, the Consumer has the right to have it exchanged by the Seller.

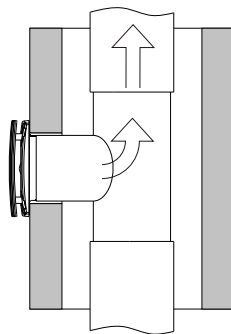
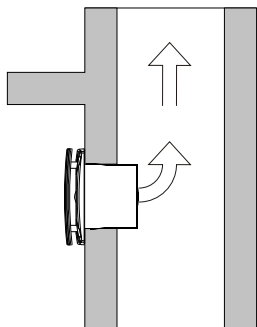
The manufacturer is not responsible for any mechanical or physical damages resulting from the unit misuse or gross mechanical effect.

Owner of the unit must follow the guidelines set forth in the operation manual.

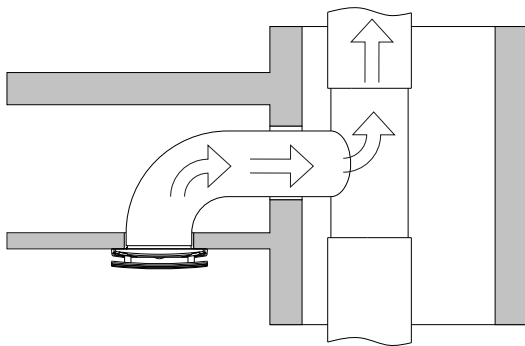


Recycle at the end of unit's service life.

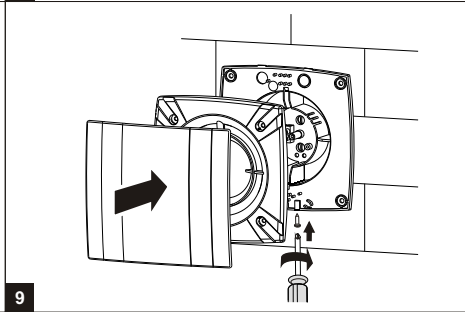
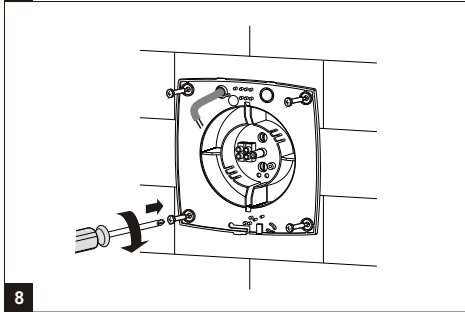
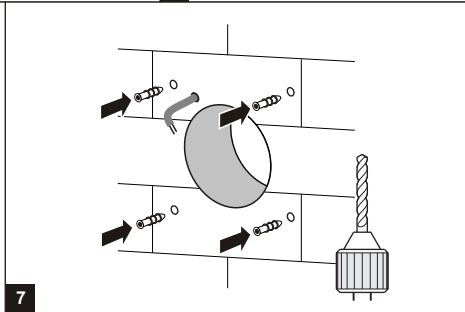
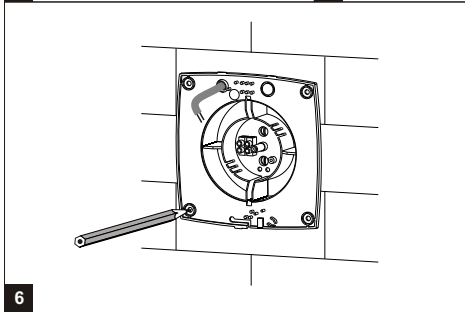
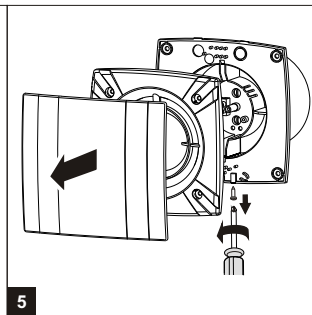
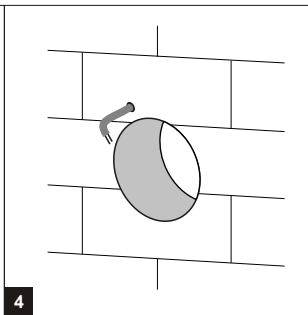
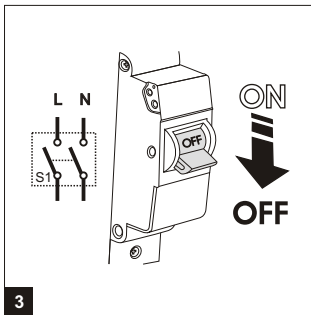
Do not dispose of with other trash.

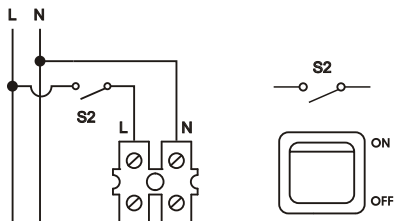


1

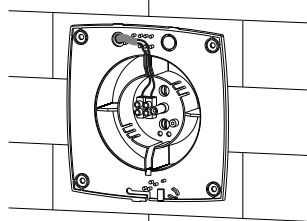


2

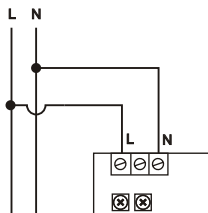




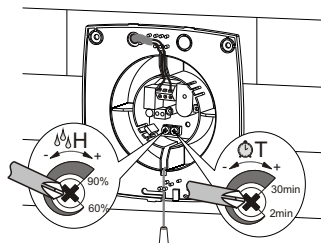
10



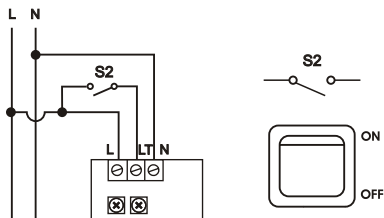
11



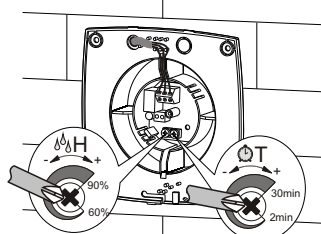
12



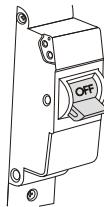
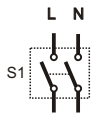
13



14



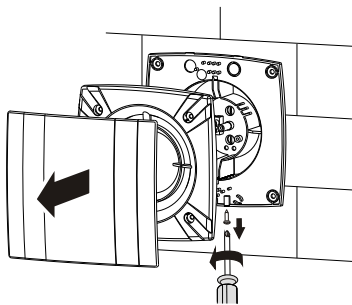
15



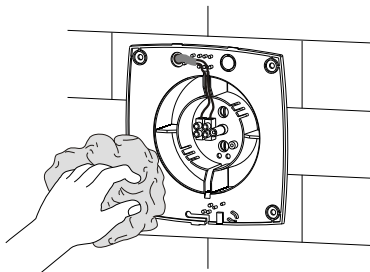
ON

 OFF

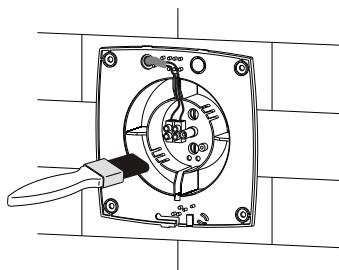
16



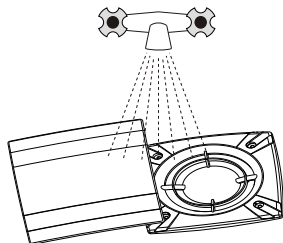
17



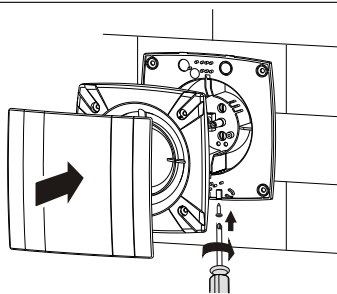
18



19



20



21

ACCEPTANCE CERTIFICATE

100 V turbo

125 T L

150 H 12

The fan has been duly certified as serviceable.

Approval mark

Manufactured on (date):

Sold
(name of trading enterprise, stamp of store)

Date of sale