

Lindab **AD21CN-M / AL21CN-M**

Munio outlet front grilles



Munio outlet front grille

AD21CN-M



Description

AD21CN-M is an adjustable double deflection grille made of aluminium. With adjustable blades, the grille is very useful for air supply and can be adapted to the required throw and air spread pattern.

AD21CN-M should be used as the standard outlet front grille for the Munio active chilled beam.

AD21CN-M is supplied with springs for installation into the Munio telescope extension piece.

For more information please refer to "[Munio - Active Chilled Beam](#)".

Maintenance

The grille can be removed easily to gain access to the Munio plenum. For full maintenance instruction please check [Munio installation instruction](#) on www.lindQST.com.

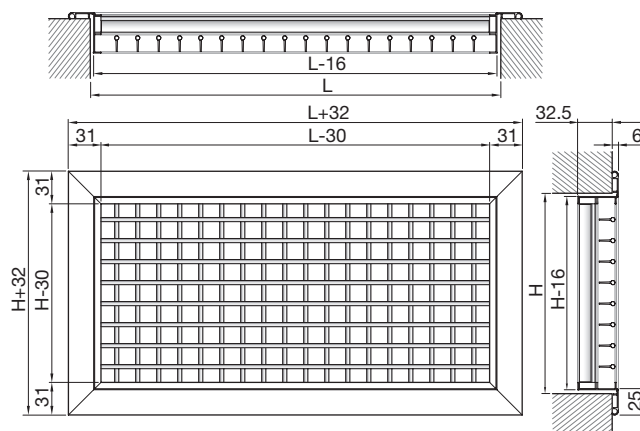
The external parts of the grille should be wiped with a damp cloth.

Order Code

Product:	AD21CN-M - aaaa - 100 - cccc
Type: AD21CN-M	
L - measure mm: 800, 1000, 1200, 1400	
H - measure [mm]: 100	
Grille standard finish: ---- = Anodized aluminium 9010 = RAL 9010, Gloss 30 9003 = RAL 9003, Gloss 30 xxxx = On request, other RAL-colour	

Example: AD21CN-M-1200-100-9003

Dimensions



L x H mm	Free area A m ²	Weight kg
800 x 100	0.046	1.0
1000 x 100	0.066	1.4
1200 x 100	0.078	1.6
1400 x 100	0.092	1.9

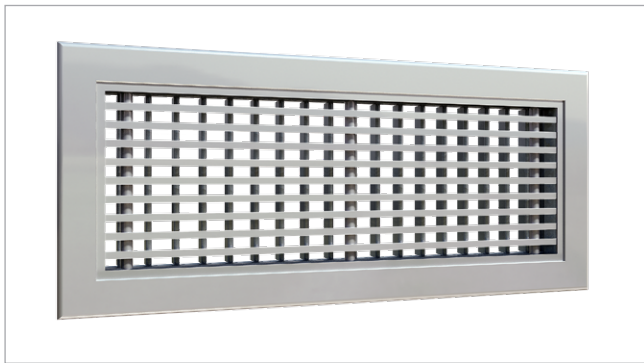
Materials and finish

Grille: Aluminium
Standard finish: RAL 9003 or RAL 9010.

The grille is available in natural anodised finish and in other colours. Please contact Lindab's sales department for further information.

Munio outlet front grille

AL21CN-M



Description

AL21CN-M is a rectangular aluminium grille with fixed horizontal 15° bended bars and additional vertical directional bars for regulation of distribution pattern.

AL21CN-M is used as a outlet front grille for the Munio active chilled beam.

It is supplied as a standard with springs for installation into the Munio telescope extension piece.

For more information please refer to "[Munio - Active Chilled Beam](#)".

Maintenance

The grille can be removed easily to gain access to the Munio plenum.

For full maintenance instruction please check [Munio installation instruction](#) on www.lindQST.com.

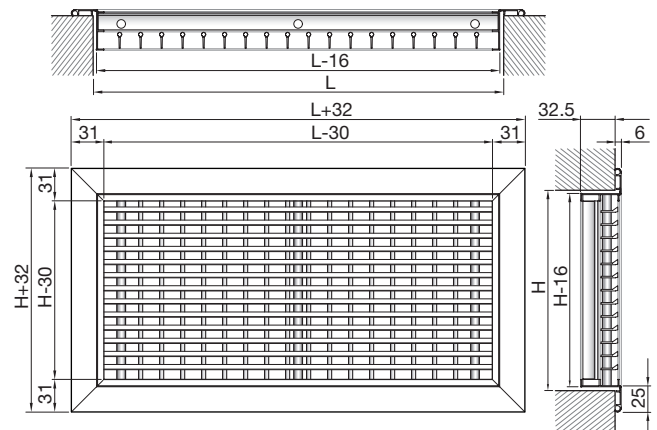
The external parts of the grille should be wiped with a damp cloth.

Order Code

Product:	AL21CN-M - aaaa - 100 - cccc
Type:	AL21CN-M
L - measure mm:	800, 1000, 1200, 1400
H - measure mm:	100
Grille standard finish:	----
	---- = Anodized aluminium
	9010 = RAL 9010, Gloss 30
	9003 = RAL 9003, Gloss 30
	xxxx = On request, other RAL-colour

Example: AL21CN-M-1200-100-9003

Dimensions



L x H mm	Free area A m ²	Weight kg
800 x 100	0.048	1.0
1000 x 100	0.060	1.4
1200 x 100	0.073	1.6
1400 x 100	0.085	1.9

Materials and finish

Grille: Aluminium
Standard finish: RAL 9003 or RAL 9010.

The grille is available in natural anodised finish and in other colours. Please contact Lindab's sales department for further information.