

Supply air nozzle VŠ-5

Application

Air supply nozzles VŠ-5 are applied in the supply of cold or warm air in rooms where long throw distances and low noise operation are required. By combining individual nozzles into a block, the throw distance is increased proportionally. There is a choice of several mounting methods.

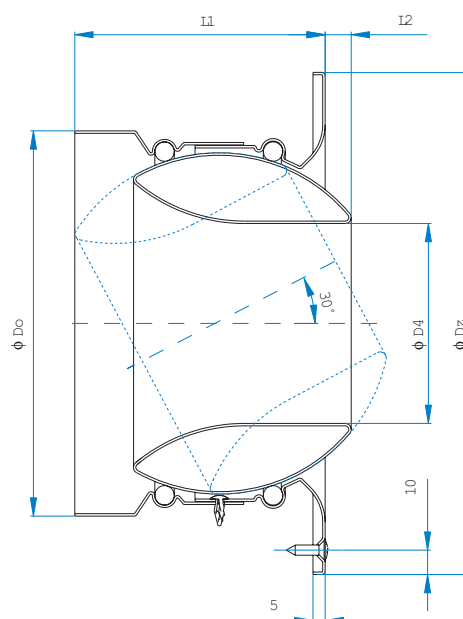
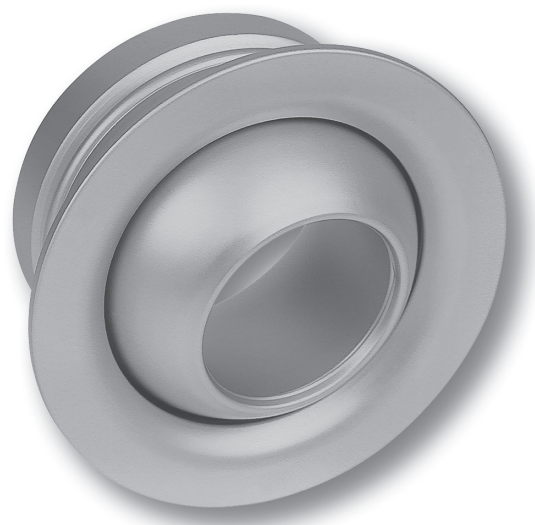
Description

Supply nozzles VŠ-5 are adjustable. The air jet can be adjusted:

- manually, in all directions, within a $\pm 30^\circ$ range
- by means of an electric motor or thermostat element, in horizontal and vertical direction, within a $\pm 30^\circ$ range.

The nozzle setting depends on the supplied air temperature. The supply nozzle is integrated in a housing, thus even with the largest size, 400, it does not project into the room by more than 45 mm (see dimension L2 as a function of the setting angle 0°).

30° Supply nozzles VŠ-5 are made of galvanised eloxal treated aluminium sheet. On customer's request, nozzles can be powder painted in any of the RAL scale colours.



Sizes and dimensions

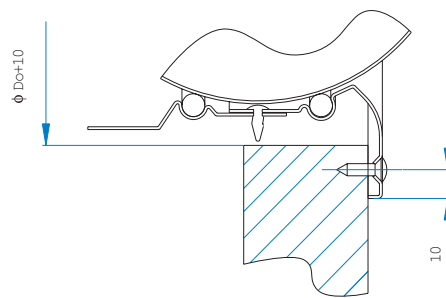
L2* ... corresponds to the setting angle 0°

Size	ΦD_o	ΦD_z	ΦD_4	L1	L2*	A_{ef} (m ²)	Weight (kg)
100	98	146	40	87	-5	0.0013	0.20
125	123	171	64	91	-1	0.0032	0.27
160	158	206	82	98	11	0.0053	0.3
200	198	252	108	108	19	0.0092	0.55
250	248	312	136	121	29	0.0145	0.77
315	313	377	174	145	35	0.0238	1.12
400	398	472	230	171	45	0.0415	1.64

Mounting methods:

- **Standalone nozzle (V)**

- A nozzle without extensions is mounted by means of three bolts from its face. The mounting opening dimension is $\Phi D_o+10\text{mm}$.

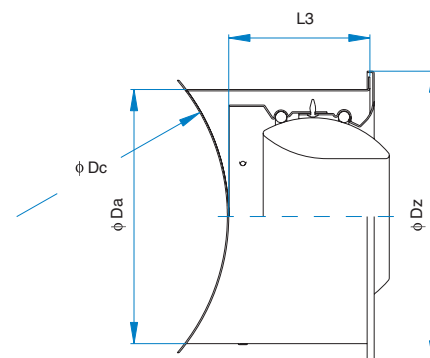
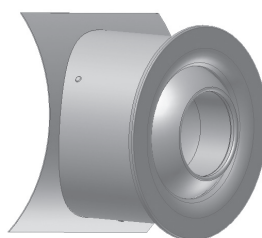


- **Mounting with extensions (designations D,K,E)**

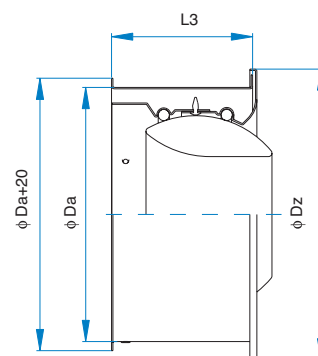
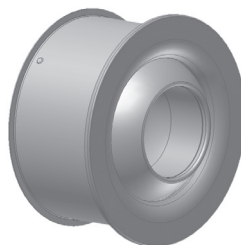
Visible nozzle mounting by means of an extension. The nozzle is supplied with the extension already installed. The installation technician mounts the extension to a round or rectangular duct by means of rivets or self-tapping screws. On customer's request, the extension can be powder painted in any of the RAL scale colours. The duct diameter ΦD_c shall be specified in the order.

The extension is mounted separately. A standard dimension duct is attached to the extension connector.

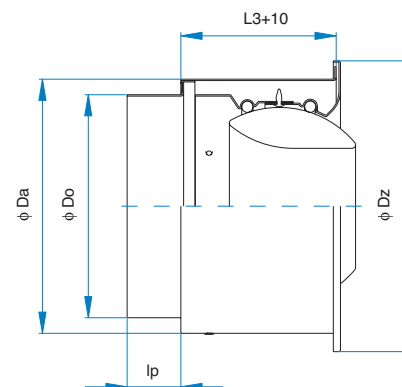
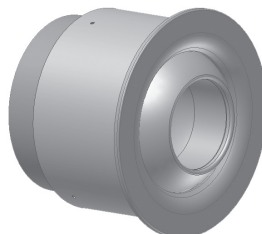
Mounting to a round duct (D)



Mounting to a rectangular duct (K)

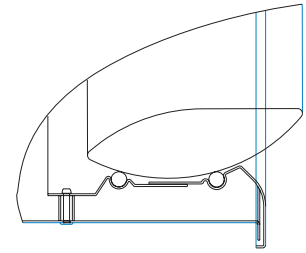
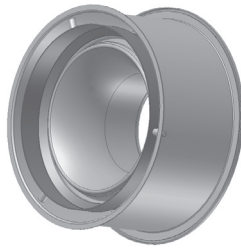


Mounting with a connector to a duct (E)



• **Mounting of a nozzle on the extension**

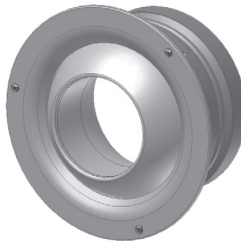
The nozzle is fixed into the extension on the side face, thus there are no bolts on its face side.



Size	ΦDo	ΦDz	ΦDa	$\Phi Da+20$	L3	ΦDo min	lp
100	98	146	118	138	90	160	63
125	123	171	143	163	95	200	63
160	158	206	178	198	100	225	63
200	198	252	224	244	110	280	83
250	248	312	284	304	120	355	78
315	313	377	349	369	150	400	78
400	398	472	444	464	170	560	73

Adjustment methods:

- Manual adjustment in all directions, within a $\pm 30^\circ$ (R)



• **Electric motor adjustment, for standalone mounting**

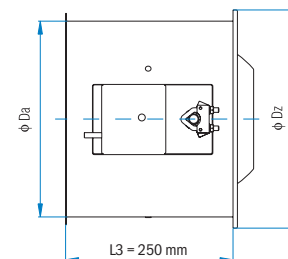
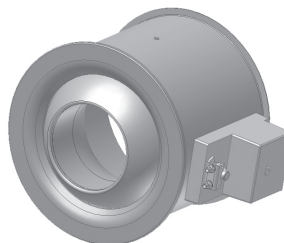
B4 motor Belimo NM 24A

B5 motor Belimo NM 230A

B6 motor Belimo NM 24A SR

Variants D, K and E available.

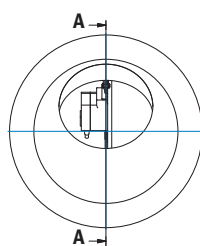
With all the variants, the L3 dimension equals 250 mm.



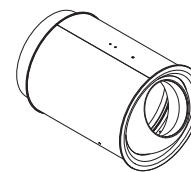
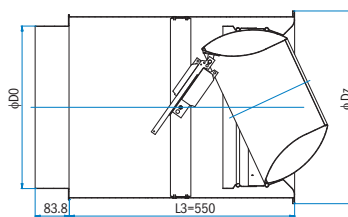
Adjustment methods:

- **Electric motor adjustment, internal drive**

- B1 LH** motor Belimo LH 24A 100
- B2 LH** motor Belimo LH 230A 100
- B3 LH** motor Belimo LH 24A SR
- B4 LH** motor Belimo LH 24A SR100



A-A (0,25 : 1)



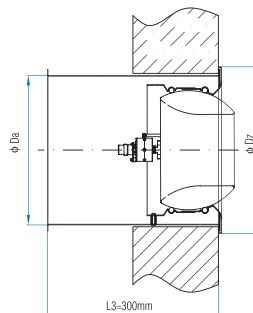
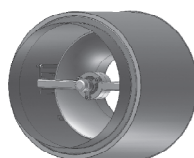
Variants D, K and E available.

With all the variants, the L3 dimension equals 550 mm. Variant is available in following sizes: 160, 200, 250, 315 and 400.

- **Thermostatic regulation**

Available designs: D, K or E.

The dimension L3 is 300 mm and is the same for all sizes. The designs are compatible with the sizes 200, 250, 315 and 400.



Advantages

- Automatic regulation using a thermostatic head
- Requires no motor or installation required for motor power supply and control

Ordering key

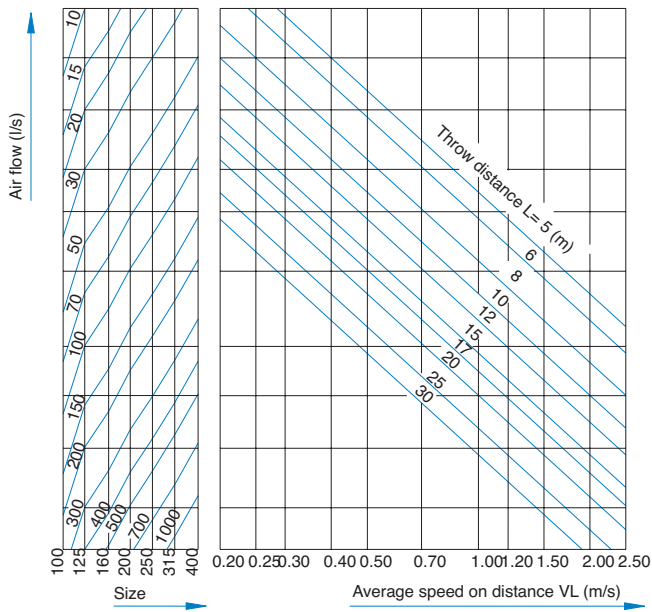
VŠ - 5 / D / R / C0 Size 160

1 2 3 4 5

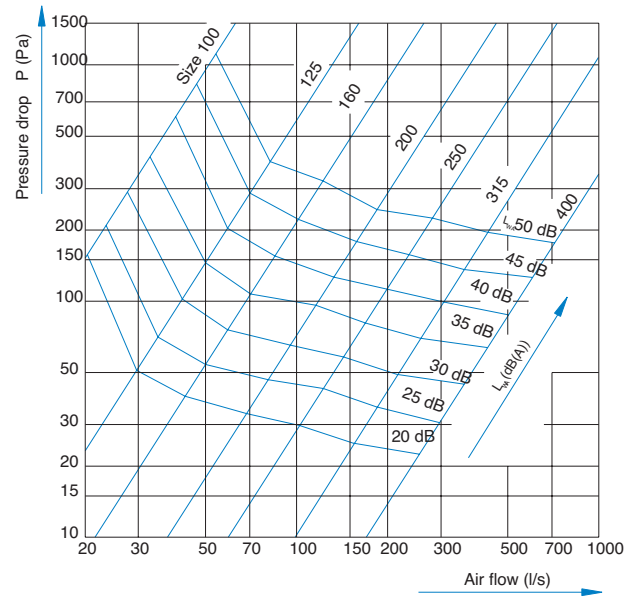
1	
VŠ-5	
2	Installation
V	Nozzle without extension – mounting with three bolts
D	Mounting to a round duct (specify ϕDc in the order)
K	Mounting to a rectangular duct
E	Mounting with a connector to a duct
3	Regulation
R	Manual adjustment
B4	Motor Belimo NM 24A standalone mounting
B5	Motor Belimo NM 230A standalone mounting
B6	Motor Belimo NM 24A SR standalone mounting
B1LH	Motor Belimo LH 24A 100
B2LH	Motor Belimo LH 230A 100
B3LH	Motor Belimo LH 24A SR
B4 LH	Motor Belimo LH 24A SR 100
TR	Thermostatic regulation*
4	Finish
C0	Eloxal treated, in the original Al colour (C0)
RAL	Standard RAL 9010 (30 % gloss) (on customer's request, any RAL scale colour)
5	Standard sizes
	100
	125
	160
	200
	250
	315
	400

* Variant is available in following sizes: 200, 250, 315 and 400.

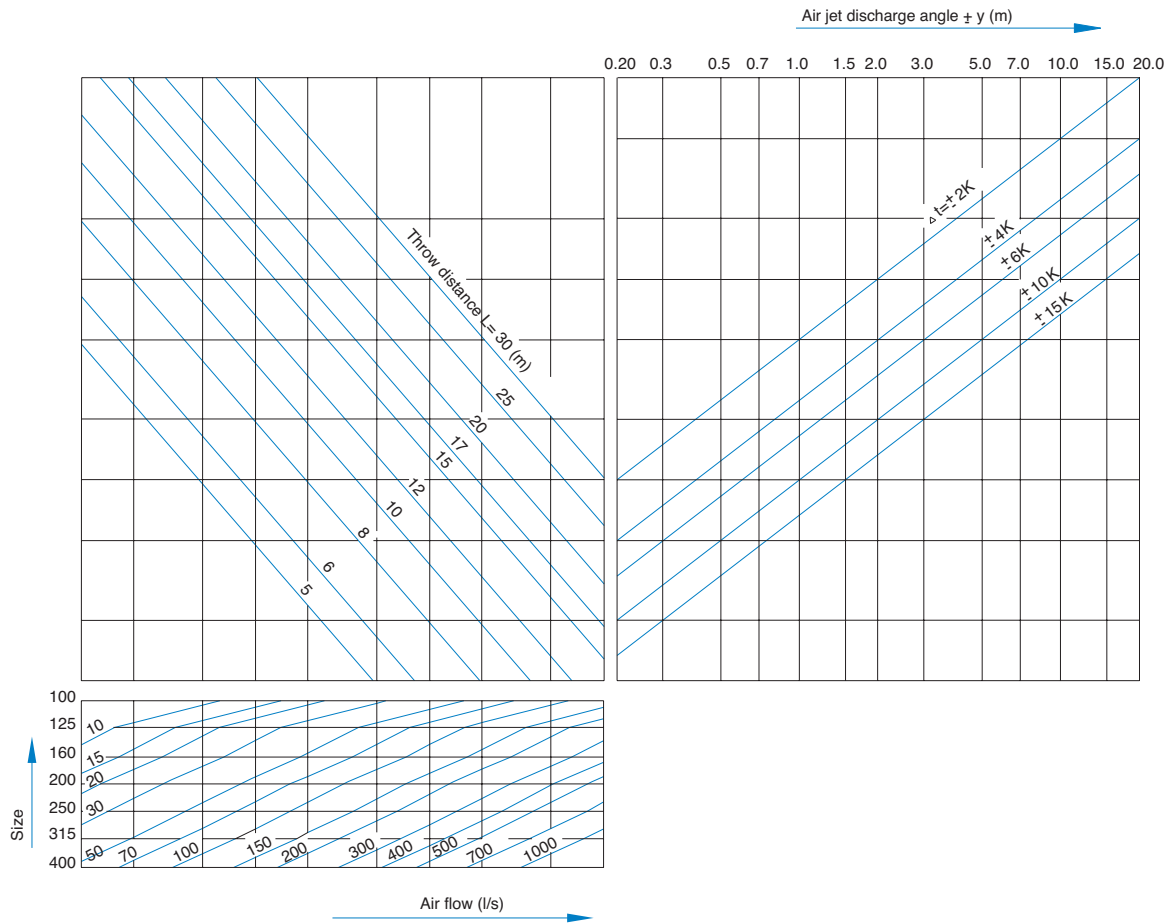
Air velocity in the air jet centre and throw distance



Pressure drops and noise levels



Air jet discharge angle



The right for technical changes reserved.